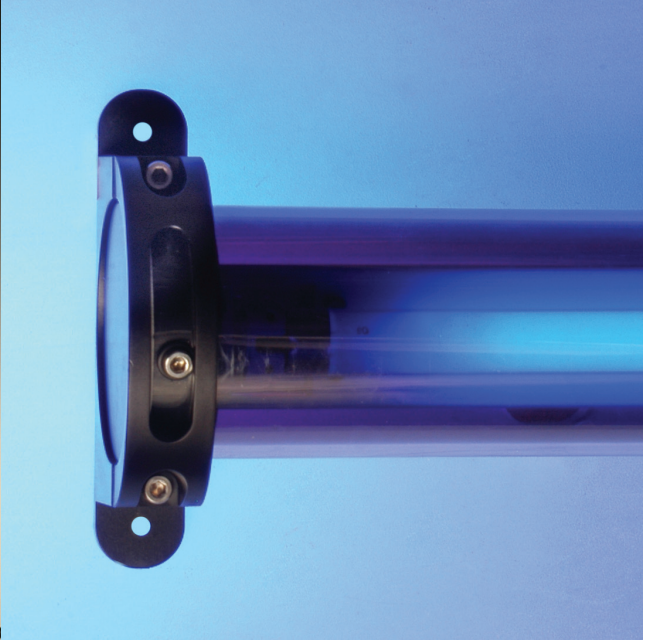


Tube Light

Linear tube lighting system IP65



RADIANT

Tube Light

Linear lighting tube system IP65

The Radiant Tube Light system has been developed for use in a wide variety of interior and exterior lighting applications where an enclosed linear line of light is required.

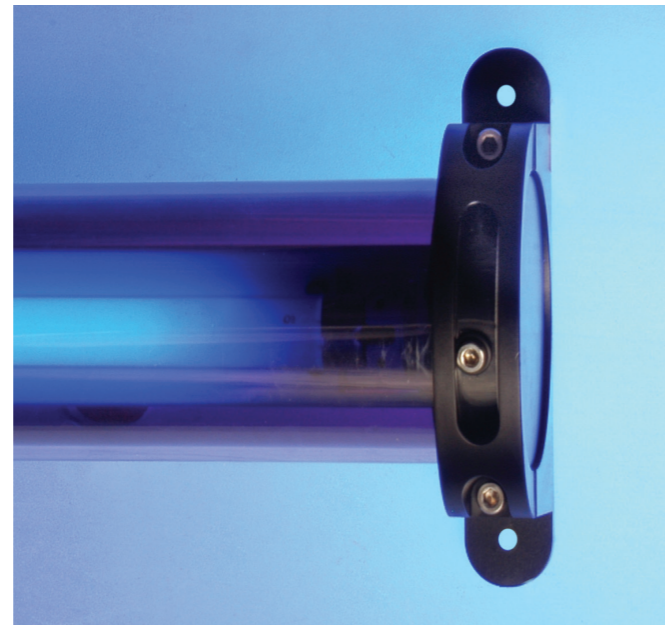
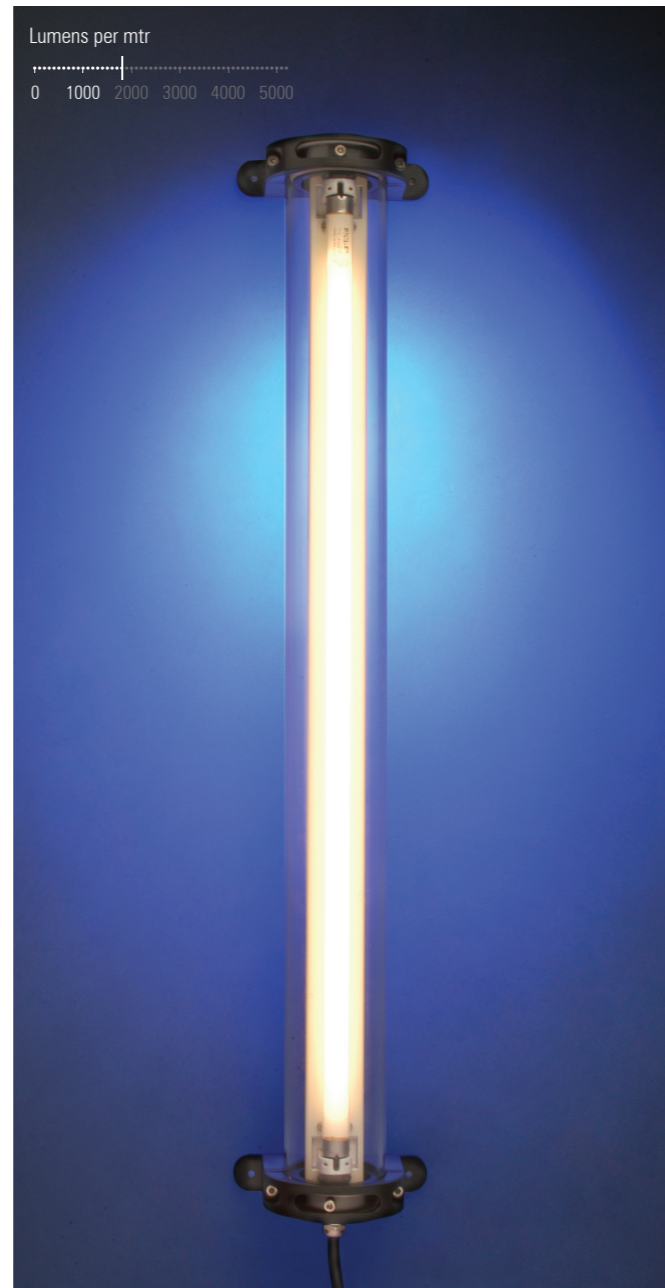
The system can incorporate either LED light engines or fluorescent lamps in a range of Wattages. There are many LED options, including RGBW and white LED versions.

LED drivers are located within the luminaire, located behind the reflector. Remote driver versions are also available for PLL lamps and double sided LED arrays where 360° distribution is required.

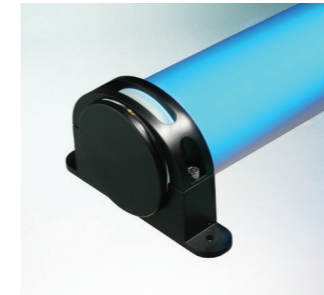
The outer extruded UV resistant polycarbonate tube is available in both clear and frosted finishes. Colour gels can be supplied to fit with the fluorescent lamps for decorative applications.

A surface mount bracket is available as well as a pendant suspension kit and custom mounting brackets.

The surface mounting brackets allows limited rotation around the major axis to allow wall grazing and washing effects to be achieved.



LED projector version
 1.2 Watt LED arrays with lenses for wall grazing or horizontal pendant applications. 25 or 50 mm LED pitch.
 Integral line voltage dimmable driver
 Clear extruded polycarbonate tube.
 Surface mounting brackets available in black, clear and white polycarbonate.



LED RGB or RGBW diffuse version
 Low power multi chip LED arrays to give smooth colour changing diffused effect.
 Single sided or twin sided LED boards for surface mount or pendant use.
 Frosted extruded polycarbonate tube.
 Surface mounting brackets available in black, clear and white polycarbonate.



Single ended PLL fluorescent version surface mount
 Four sizes from 240 mm to 550 mm
 Clear or frosted extruded polycarbonate tube.
 Integrated line voltage ballast.
 Surface mounting brackets available in black, clear and white polycarbonate.



Single ended PLL fluorescent version pendant
 Four sizes from 240 mm to 550 mm
 Clear or frosted extruded polycarbonate tube.
 Remote line voltage ballast.
 Pendant kits with a variety of mounting brackets.



Multi LED version
 0.3 Watt LED arrays no lenses for uplighting and wide beam general lighting applications.
 5 or 10 mm LED pitch.
 Integral line voltage dimmable driver
 Clear or frosted extruded polycarbonate tube.
 Surface mounting brackets available in black, clear and white polycarbonate.



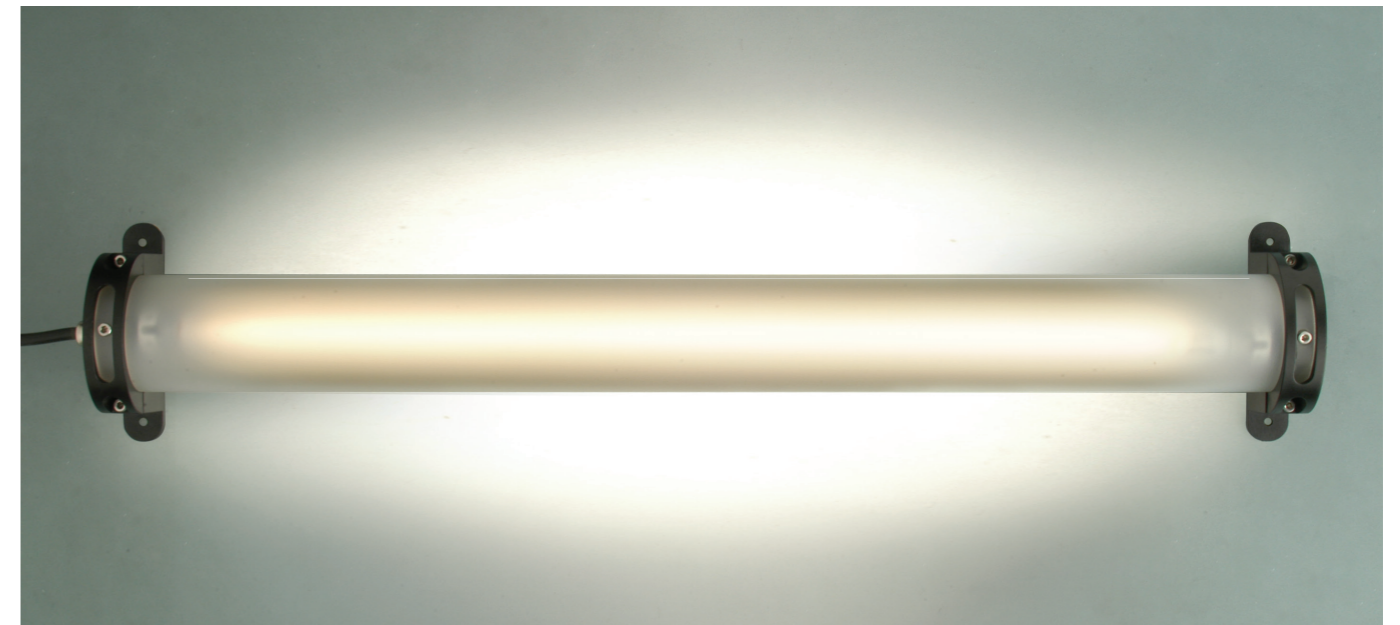
LED RGB or RGBW clear version
 Low power multi chip LED arrays to give smooth colour changing diffused effect.
 Single sided or twin sided LED boards for surface mount or pendant use.
 Frosted extruded polycarbonate tube.
 Surface mounting brackets available in black, clear and white polycarbonate.

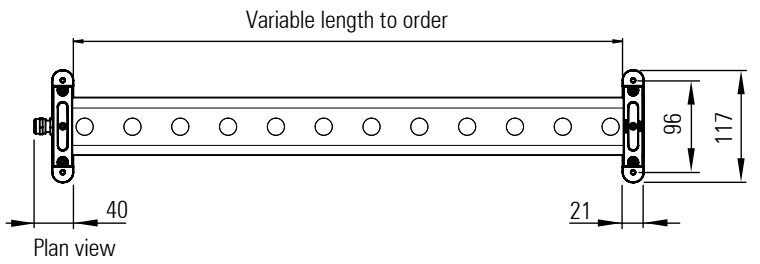


Double ended T5 fluorescent versions
 Four sizes from 600 mm up to 1,500 mm
 HE or HO lamps. Integrated line voltage ballast.
 Clear or frosted extruded polycarbonate tube.
 Surface mounting brackets available in black, clear and white polycarbonate.

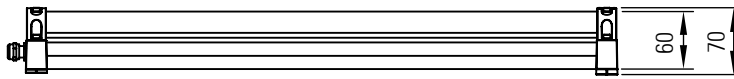


E27 version for self ballasted CFL lamps up to 11 Watts and incandescent lamps up to 20 Watts.
 Clear or frosted extruded polycarbonate tube.
 Surface mounting brackets available in black, clear and white polycarbonate.





Plan view

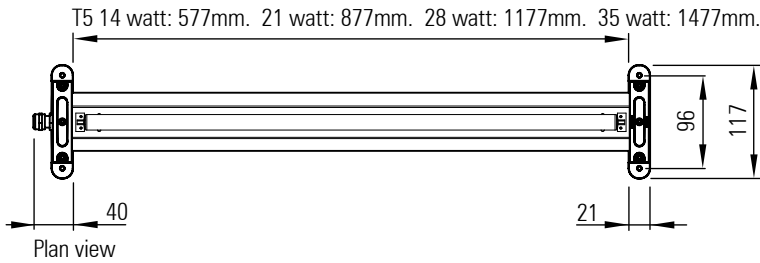
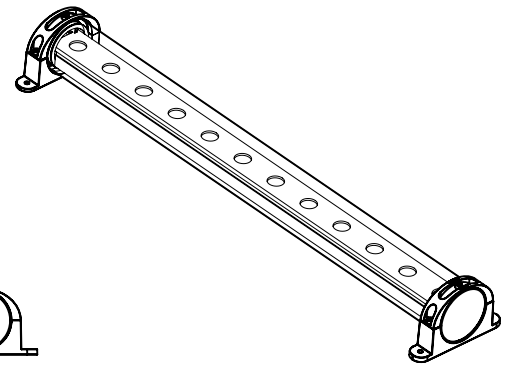


Side view

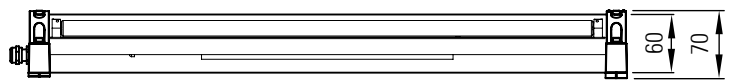


End view

LED version



Plan view

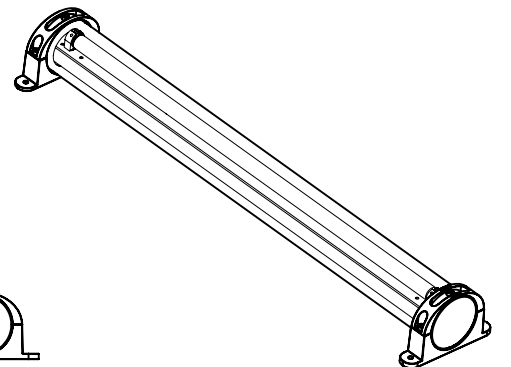


Side view



End view

T5 Fluorescent version



Create an order-code by selecting one option from each column in the table below.
 e.g. TUBE LIGHT E27 . IP65 . 160mm . Warm White . CRI 80 . E . Pendant . End . Clear . Black .

Product Code	IP	LED Spacing	Length (mm)	Colour Temp. (K)	CRI	Optics	Bracket Type	Feed	Cover	Finish
TUBE LIGHT LED	65	25 or 50mm	600	Warm white	80	E	Direct fixing Pendant	End	Clear Diffuse	Black Clear - light surface texture White Any RAL colour
TUBE LIGHT multi LED		5 or 10mm	900 1,200 1,500	Cool white RGB RGBW Dynamic - white		W M N				
TUBE LIGHT LED RGB		10 or 20mm	(160 for E27)						sky blue royal blue lavender pink purple red orange green yellow candlelight	
TUBE LIGHT E27		N.A.								
TUBE LIGHT T5		N.A.								
TUBE LIGHT PLL		N.A.								

Radiant Architectural Lighting
 10 Broadbent Close
 20 - 22 Highgate High Street
 London N6 5JW
 ENGLAND UK

T: + 44 (0) 20 8348 9003
 F: + 44 (0) 20 8348 6478
 E: david@radiantlights.co.uk
 www.radiantlights.co.uk

Products and literature designed by
DAVID MORGAN ASSOCIATES
 June 2016

